



pipetmaX®  
268



**BUILT FOR YOUR  
APPLICATIONS  
READY AT ANY SCALE**



pipetmaX®  
278

 **GILSON®**



## PIPETMAX® Range Overview

### Accuracy and Precision

Powered by PIPEtMAN® technology for reliable, repeatable pipetting

### Reproducibility

Reduce user-to-user variability and experimental rework

### Standard Tips

Uses Gilson PIPEtMAN® DIAMOND Tips—no proprietary automation tips required

### Labware Flexibility

Compatible with standard tubes, reservoirs, and 96/384-well microplates

### Simple Software

TRILUTION® micro Software control with Protocol Builder's drag-and-drop method creation; wizards for qPCR and normalization

### Built For Your Applications, At Any Scale

Whether you are introducing entry-level automation (PIPETMAX® 268) or scaling throughput and walkaway time (PIPETMAX® 278), PIPEtMAX brings dependable liquid handling to:

- qPCR/ PCR
- NGS library preparation
- ELISA
- Protein assays
- Kinase assays
- Custom LH
- Biochemical assay
- Enzymatic reactions
- Cell based assays
- Serial dilutions



	PIPETMAX® 268	PIPETMAX® 278
<b>Ideal for</b>	<ul style="list-style-type: none"> <li>• Consistent assay setup</li> <li>• Everyday tasks</li> </ul>	<ul style="list-style-type: none"> <li>• Complex routines</li> <li>• Plate replication</li> <li>• Integrated peripherals</li> </ul>
<b>Target Throughput</b>	Low throughput	High throughput
<b>Volume Range</b>	1-200 µL (1200 µL with optional MAX4x1200 Pipette Head)	1-200 µL (1200 µL with optional MAX4x1200 Pipette Head)
<b>Bed Capacity</b>	9 SLAS positions	16 SLAS positions
<b>Bed Type</b>	Moving bed	Fixed Bed
<b>Dimensions (W × D × H)</b>	54.4 x 65.5 x 53.1 cm	95 x 68.4 x 58 cm (95.0 x 68.4 x 74.4 cm with riser)
<b>Weight</b>	24.9 kg	68 kg
<b>Tip Type</b>	PIPEtMAN® DIAMOND Tips	PIPEtMAN® DIAMOND Tips
<b>Pipette Heads</b>	Interchangeable heads: <ul style="list-style-type: none"> <li>• MAX8x20</li> <li>• MAX8x200</li> <li>• MAX4X1200 µL</li> </ul>	Interchangeable heads: <ul style="list-style-type: none"> <li>• MAX8x20</li> <li>• MAX8x200</li> <li>• MAX4X1200 µL</li> </ul>
<b>Software</b>	<ul style="list-style-type: none"> <li>• TRILUTION® micro</li> <li>• Protocol Builder</li> <li>• Software Wizards</li> </ul>	<ul style="list-style-type: none"> <li>• TRILUTION® micro</li> <li>• Protocol Builder</li> <li>• Software Wizards</li> </ul>
<b>Sample Preparation Options</b>	<ul style="list-style-type: none"> <li>• Magnetic Bead Rack</li> <li>• BioShake 3000-T (heater/shaker)</li> </ul>	<ul style="list-style-type: none"> <li>• Magnetic Bead Rack</li> <li>• BioShake 3000-T (heater/shaker)</li> <li>• ColdPlate (heater/chiller)</li> <li>• Q1 (heater/chiller/shaker)</li> </ul>
<b>UV/HEPA Option</b>	UV/HEPA module cabinet	UV/HEPA module hood



## Applications and Use Cases:

### qPCR/PCR

Use software wizards to set up reaction mixes, normalization, and plate layouts with consistent pipetting across replicates

### ELISA and Protein Assays

Automate reagent addition, serial dilutions, and plate replication to reduce hands-on time and errors

### NGS Library Prep

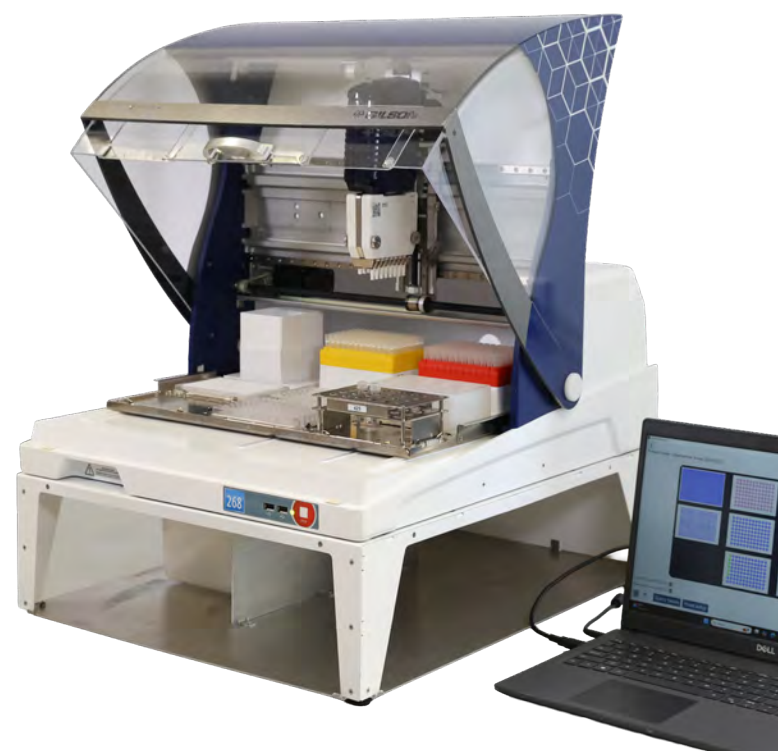
Execute bead cleanups, serial dilutions, and normalization steps with consistent timing to protect library quality

### Cell-Based and Biochemical Assays

Prepare plates with accurate titrations and reagent additions; scale throughput with PIPETMAX 278's 16 position bed

### Plate Replication and Reformatting

Move from tubes to plates or replicate plates (e.g., 4x96 to 1x384) with minimal user intervention



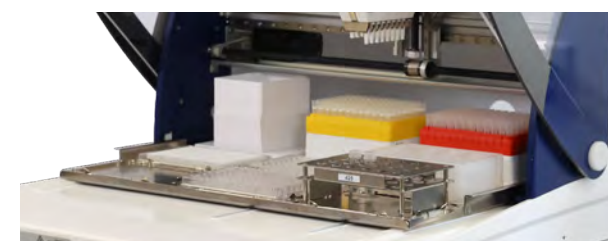
## PIPETMAX 278 Highlights

- **16 Position Bed**  
Medium-throughput capacity enables longer, unattended runs and complex routines
- **Interchangeable Multichannel Heads**  
4- and 8-channel options with built-in tip intelligence (use 1 - 8 tips as needed)
- **Standard PIPETMAN DIAMOND Tips**  
Reduce consumable costs while maintaining precision
- **Integrated Peripherals**  
Seamless heater/chiller/shaker modules (BioShake 3000-T, Q1, ColdPlate) for temperature control and mixing
- **Status Feedback**  
LED status lights (ready/paused/running/error) and an integrated screen for real-time run information
- **Containment Options**  
Standard side panels with door, or panel-free configuration for biosafety cabinet use; optional UV/HEPA module
- **Tip Disposal**  
On-board bin with optional under-bed disposal via riser for higher tip waste capacity



## PIPETMAX 268 Highlights

- **Consistency and Reproducibility**  
Automates routine pipetting to minimize user variation across replicates
- **Compact Footprint**  
A benchtop solution that fits next to you; ideal for everyday assay setup
- **PIPETMAN Inside**  
Trusted accuracy and precision with exchangeable pipetting heads and removable tray
- **Versatility**  
Works with standard labware (96/384-well, strips, tubes) and applications including qPCR, NGS prep, ELISA, protein assays, kinase assays, and more
- **Traceability**  
Simple automated run reports via software





## MAXimize flexibility

with a variety of racks, labware, and pipetting heads to fit any workflow.

## MAXimize throughput

by running more plates per run with a 16 position bed and extended walk-away automation.

## MAXimize adaptability

with exchangeable pipetting heads and labware options that let you tailor the system to your exact application needs.



## MAXimize precision

by using calibrated heads and standard PIPETMAN DIAMOND Tips for consistent, reliable results every time.

## MAXimize cleanliness

with an optional UV/HEPA filtration module and/or external hood sensor for use in a biosafety cabinet that help maintain a contamination-free environment.

## MAXimize sustainability

by reducing consumable costs with standard tips and environmentally friendly blister refills.

## Designed to handle complex workflows and high-throughput protocols.

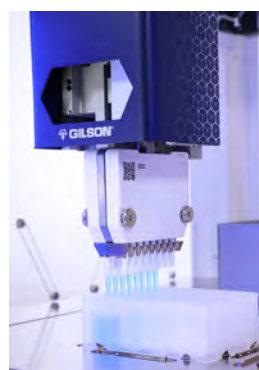
Use your preferred labware and reagents without limitations. Built to scale with your research and deliver longer walkaway automation for maximum productivity.

### It's all here:



#### Integrated peripherals

Add heater/chiller/shaker modules for precise thermal management and mixing during complex protocols.



#### PIPETMAN precision, elevated

With PIPETMAN technology at its core, PIPETMAX 278 delivers reliable, consistent pipetting, plate to plate, protocol to protocol - while giving you the freedom of extended walkaway automation and high throughput flexibility, lot to lot, time after time.



#### Stay informed at a glance

LED status lights and an integrated screen provide real-time feedback, whether your system is ready, running, paused, or needs attention - you're always in control.

# Your lab's workhorse for high throughput automation without the complexity.



## HANDS-OFF ASSAY PREP THAT DOESN'T SLOW YOU DOWN

### THE CHALLENGE

Manual assay prep for ELISAs, dose-response curves, IC<sub>50</sub> assays, and 384-well formats is tedious, time-consuming, and introduces unnecessary variability into critical screening workflows.

### PIPETMAX SOLUTION

PIPETMAX® 268 Bioassay and PIPETMAX® 278 Bioassay configurations automate assay prep to increase throughput, improve reproducibility, and free scientists from repetitive microliter pipetting.

### KEY BENEFITS

Discovery moves faster when the prep doesn't slow you down.

From ELISAs to dose-response curves to 384-well assays, PIPETMAX 268 Bioassay and PIPETMAX 278 Bioassay free your team from repetitive pipetting while built-in tip intelligence and standard PIPETMAN DIAMOND Tips help keep consumable costs under control. With consistent, walk-away operation and support from real Gilson scientists, your team can run more plates and make decisions with confidence.

### KEY CAPABILITIES

- **Low-Volume Precision**
  - Accurate dispensing difficult to achieve manually
  - Supports miniaturized assays
- **Built-In Tip Intelligence**
  - Optimizes speed and tip usage
  - Reduces unnecessary waste
- **Thermal and Mixing Automation**
  - Optional heater, shaker, and chiller modules
- **Flexible Programming**
  - Example workflows for ELISA, IC<sub>50</sub>, serial dilutions
  - Optional Protocol Builder

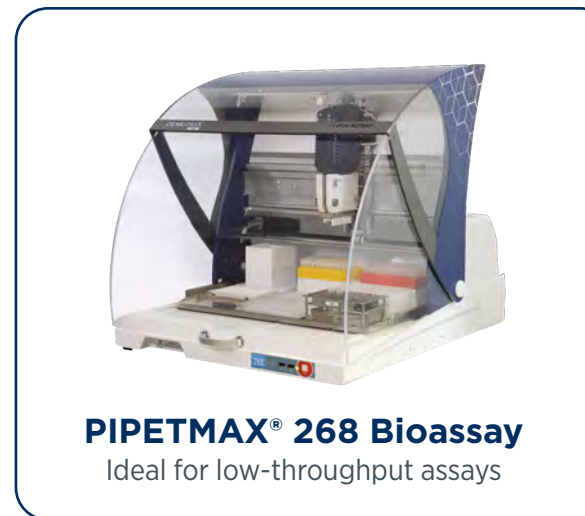
### BIOASSAY SYSTEM

#### INCLUDES:

- Two interchangeable pipette heads
- Tip reload blocks
- Selection of tube racks
- TRILUTION® micro Software
- Tip starter pack

### THIS APPLICATION-CONFIGURED SYSTEM INCLUDES:

- PIPETMAX 268 or PIPETMAX 278 optimized for 96- and 384-well assays
- Low-volume pipetting configuration
- Example bioassay protocol
- qPCR and Normalization software wizards



### TECHNICAL SPECIFICATIONS

	PIPETMAX 268 BIOASSAY	PIPETMAX 278 BIOASSAY
Volume Range	1–200 µL	1–200 µL
Bed Capacity	9 positions	16 positions
Dimensions (W × D × H)	54.4 x 65.5 x 53.1 cm	95 x 68.4 x 58 cm
Weight	24.9 kg	68 kg
Tip Type	PIPETMAN® DIAMOND Tips	PIPETMAN® DIAMOND Tips
Target Throughput	Low throughput	High throughput
Pipette Heads	Two interchangeable heads (MAX8x20, MAX8x200)	Two interchangeable heads (MAX8x20, MAX8x200)
Software	TRILUTION® micro Software	TRILUTION® micro Software

### OPTIONAL ACCESSORIES

PIPETMAX 268 BIOASSAY	PIPETMAX 278 BIOASSAY
PIPETMAX 268 Riser off-bed tip disposal	PIPETMAX 278 Riser off-bed tip disposal
Magnetic bead rack	Magnetic bead rack
Heater/Shaker	Heater/Shaker/Chiller
PIPETMAX 268 UV/HEPA module kit	PIPETMAX 278 UV/HEPA module kit
Interchangeable head MAX4x1200 (1200 µL)	Interchangeable head MAX4x1200 (1200 µL)
Protocol Builder Software	Protocol Builder Software



### PRECISION AND PROTECTION FOR SENSITIVE qPCR WORKFLOWS

#### THE CHALLENGE

qPCR workflows are highly sensitive to variability, contamination, and user technique. Manual pipetting introduces risk at exactly the point when accuracy matters most.

#### PIPETMAX SOLUTION

Designed specifically for sensitive qPCR workflows, PIPETMAX® 268 qPCR and PIPETMAX® 278 qPCR configurations combine:

- Trusted PIPETMAN precision
- UV/HEPA protection
- Optional heater, shaker, and chiller modules
- Example qPCR methods and guided assistants

#### KEY BENEFITS

Your results deserve more than “good enough.”

qPCR is too important to leave to chance. PIPETMAX 268 qPCR and PIPETMAX 278 qPCR deliver the precision and consistency only automation can provide—backed by decades of PIPETMAN accuracy scientists trust. UV/HEPA filtration adds peace of mind, while guided tools simplify setup for every user. And when you need help, real Gilson scientists are there to support you with training, optimization, and protocol guidance.

#### KEY CAPABILITIES

- UV/HEPA Filtration
  - Helps maintain a clean qPCR environment
  - Reduces contamination risk
- Built-In Tip Intelligence
  - Optimizes tip usage automatically
  - Improves speed and efficiency
- Guided Workflow Tools
  - Example qPCR protocol included
  - qPCR Assistant for guided setup
  - Normalization Assistant for automated dilution
- Thermal Flexibility
  - Optional chilling at 4°C
  - Optional heater and shaker modules

#### qPCR SYSTEM INCLUDES:

- Two interchangeable pipette heads
- Tip reload blocks
- Selection of tube racks
- UV/HEPA filtration module
- Underbed tip disposal unit
- TRILUTION® micro Software
- Tip starter pack

#### THIS APPLICATION-CONFIGURED SYSTEM INCLUDES:

- PIPETMAX 268 or PIPETMAX 278 configured for qPCR
- UV/HEPA Filtration Module
- Example qPCR protocol
- qPCR and Normalization Assistants
- Optional modules for temperature-sensitive workflows
- Standard PIPETMAN® DIAMOND Tips compatibility



#### TECHNICAL SPECIFICATIONS

	PIPETMAX 268 qPCR	PIPETMAX 278 qPCR
Volume Range	1-200 µL	1-200 µL
Bed Capacity	9 positions	16 positions
Dimensions with Riser and UV/HEPA Filtration Module (W x D x H)	64 x 73.5 x 108 cm	95.0 x 68.4 x 109.9 cm
Weight with Riser and UV/HEPA Filtration Module	106 kg	118 kg
UV/HEPA	PIPETMAX 268 UV/HEPA module kit	PIPETMAX 278 UV/HEPA module kit
Tip Type	PIPETMAN® DIAMOND Tips	PIPETMAN® DIAMOND Tips
Target Throughput	Low throughput	High throughput
Pipette Heads	Two interchangeable heads (MAX8x20, MAX8x200)	Two interchangeable heads (MAX8x20, MAX8x200)
Software	TRILUTION® micro Software	TRILUTION® micro Software

#### OPTIONAL ACCESSORIES

PIPETMAX 268 qPCR	PIPETMAX 278 qPCR
Magnetic bead rack	Magnetic bead rack
Heater/Shaker	Heater/Chiller/Shaker
Interchangeable head MAX4x1200 (1200 µL)	Interchangeable head MAX4x1200 (1200 µL)
Protocol Builder Software	Protocol Builder Software



## SIMPLIFIED, WALK-AWAY AUTOMATION FOR MAGNETIC BEAD-BASED NGS WORKFLOWS

### THE CHALLENGE

NGS library prep is time-consuming, stressful, and prone to variability — especially during magnetic bead-based cleanup steps where consistency and timing are critical.

### PIPETMAX SOLUTION

PIPETMAX® 268 NGS and PIPETMAX® 278 NGS automate magnetic bead-based workflows, including cleanup steps using the AMPure® XP bead-based protocols, delivering consistent, sequencing-ready libraries with no coding required.

### KEY BENEFITS

Reliable sequencing starts with reliable preparation.

PIPETMAX 268 NGS and PIPETMAX 278 NGS automate the bead-based cleanup steps that are often the weakest link in library prep. Example methods can be tailored to your SOPs, intuitive software works the way scientists think, and optional heater, shaker, and chiller modules help automate more of your workflow without adding complexity. And unlike other platforms, Gilson gives you more than an instrument—you get real scientists who have run these workflows themselves.

### KEY CAPABILITIES

- **Automated Magnetic Bead Cleanup**
  - Includes adjustable AMPure® XP cleanup method
  - Improves consistency and reproducibility
- **Built-In Tip Intelligence**
  - Uses only required tips
  - Reduces waste and consumable cost
- **Scientist-Friendly Software**
  - No coding required
  - Easy SOP customization
- **Thermal and Mixing Control**
  - Optional heater, shaker, and chiller modules

### NGS SYSTEM INCLUDES:

- Two interchangeable pipette heads
- Tip reload blocks
- Tube racks
- Underbed tip disposal unit
- Magnetic bead rack
- TRILUTION® micro Software
- Tip starter pack

### THIS APPLICATION-CONFIGURED SYSTEM INCLUDES:

- PIPETMAX 268 or PIPETMAX 278 configured for magnetic bead workflows
- Magnetic bead rack
- Includes an AMPure XP cleanup method
- Optional heater/shaker/chiller support
- NGS-ready bed layout



**PIPETMAX® 268 NGS**  
Ideal for low-throughput library prep



**PIPETMAX® 278 NGS**  
High-throughput prep with larger 16 position bed and extended walk-away runs

### TECHNICAL SPECIFICATIONS

	PIPETMAX 268 NGS	PIPETMAX 278 NGS
Volume Range	1–200 µL	1–200 µL
Bed Capacity	9 positions	16 positions
Dimensions with Riser (W x D x H)	54.4 x 65.5 x 69.6 cm	95.0 x 68.4 x 74.4 cm
Weight with Riser	33.52 kg	73 kg
Tip Type	PIPETMAN® DIAMOND Tips	PIPETMAN® DIAMOND Tips
Target Throughput	Low throughput	High throughput
Pipette Heads	Two interchangeable heads (MAX8x20, MAX8x200)	Two interchangeable heads (MAX8x20, MAX8x200)
Riser	Off-bed tip disposal	Off-bed tip disposal
Rack Type	Magnetic bead rack	Magnetic bead rack

### OPTIONAL ACCESSORIES

PIPETMAX 268 NGS	PIPETMAX 278 NGS
Interchangeable head MAX4x1200 (1200 µL)	Interchangeable head MAX4x1200 (1200 µL)
Heater/shaker	Heater/chiller/shaker option
PIPETMAX 268 UV/HEPA module kit	PIPETMAX 278 UV/HEPA module kit



## Accessories CONFIGURE ONCE — ADAPT ENDLESSLY

A variety of tube racks, plates, blocks, pipetting heads, tips, and tip accessories make PIPETMAX 268 and PIPETMAX 278 completely customizable to your application.

### EXCHANGEABLE PIPETTING HEADS

A variety of exchangeable, calibrated pipetting heads are tailored for your applications needs.

#### MAX8X20:

- 8-channel head for pipetting between 1  $\mu$ L and 10  $\mu$ L
- Ideal for: qPCR, low-volume transfers

#### MAX8X200:

- 8-channel pipette for pipetting between 20  $\mu$ L and 200  $\mu$ L
- Ideal for: ELISA, serial dilutions, plate replication

#### MAX4X1200:

- 4-channel head for pipetting between 1  $\mu$ L and 1200  $\mu$ L
- Ideal for: tubes, reservoirs, bulk dispensing



### RISER WITH STORAGE

Convenient storage and waste compartment allow you to have tip refills and accessories at your fingertips, while safely containing your tip waste.



### ON-BED TIP BIN

The on-bed tip bin sits on PIPETMAX's bed for tip disposal.



### TIP ADAPTER BLOCK

The tip adapter block is required for each position that will hold tips on PIPETMAX 268.

### TUBE AND PLATE RACKS

Select from a variety of tube and plate racks, standard metal racks, freezer blocks, and circulating chilling block. Customizable racks are available upon request.

- Tube Racks for:
  - 0.2 mL PCR tubes
  - 0.5-2.0 mL screw-cap tubes
  - 1.5-2.0 mL flip-cap tubes
- Plate Racks for:
  - 96-well PCR, flat-bottom, and deep-well plates
- Freezer Block Racks:
  - Maintain sample and reagent temperature
- Portrait Adapters:
  - Flexible plate orientation for custom workflows



### UV LIGHT AND HEPA FILTRATION OPTIONS

For customers running molecular biology applications, such as qPCR, PCR, NGS, etc., a UV/HEPA Filtration Module is available that helps ensure clean environment within the instrument to protect sample integrity for such applications.



### INTEGRATED PERIPHERAL DEVICES FOR PIPETMAX 278

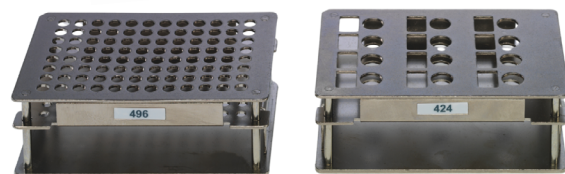
Integrated QINSTRUMENTS heater/chiller/shaker modules:

- BioShake 3000-T
  - Heating and shaking
- Q1 Module
  - Heating, chilling, and shaking in one unit
- ColdPlate
  - Active chilling to 4°C
- Adapter plates for PCR plates, deep-well plates, and tubes

### MAGNETIC BEAD PROCESSING

Automate clean-ups with confidence

- Electronic Magnetic Bead Base
- Interchangeable inserts compatible with your labware
- Uses standard PIPETMAN® DIAMOND Tips — no locked-in tips, no premium pricing
- Compatible with the labware you already use
- Smart tip optimization lowers waste and ongoing operating costs





## Compatible PIPETMAN® DIAMOND Tips

### Volumetric Specification for Transfers

#### MAXIMUM PERMISSIBLE ERRORS

Pipette Head	Volume of Distilled Water	Systematic Error (μL)	Random Error (μL)	Systematic Error (%)	Random Error (%)
MAX8X20	1 μL	±0.08	≤0.05	8.00	5.00
	10 μL	±0.15	≤0.10	1.50	1.00
	20 μL	±0.25	≤0.12	1.25	0.60
MAX8X200	20 μL	±0.50	≤0.16	2.50	0.80
	100 μL	±1.00	≤0.30	1.00	0.30
	200 μL	±2.00	≤0.50	1.00	0.25
MAX4X1200	50 μL	±4.00	≤0.70	8.00	1.40
	120 μL	±4.00	≤0.70	3.33	0.58
	600 μL	±6.00	≤1.50	1.00	0.25
	1200 μL	±9.60	≤1.80	0.80	0.15

## BLISTER REFILLS

- Available to cover volume ranges from 1 to 1200 μL
- Available with standard, sterilized, and sterilized filtered tips
- Certified tips for use with 384-well plates are also available
- PIPETMAN DIAMOND TIPS packaging is specially designed to be cost effective and environmentally friendly while maintaining the highest quality of standards
  - More convenience: just open the lid and pick the rack up
  - More environmentally-friendly: uses less plastic and reusable
  - More savings on tips: no need to pay for the box
- Use the same tips for manual pipettes, PIPETMAX 268, and PIPETMAX 278

## DISPOSABLE TIP OPTIONS

Part Number	Product Description
F167012	DL10 Reload Pack
F167013	D200 Reload Pack
F172200	DL10 Blister Refill
F172300	D200 Blister Refill
F172800	D1200 Blister Refill
F172801	D1200ST Blister Refill - Sterile
F172203	DFL10ST Blister Refill - Sterile with filter
F172303	DF30ST Blister Refill - Sterile with filter
F172503	DF200ST Blister Refill - Sterile with filter
F172803	DF1200ST Blister Refill - Sterile with filter
F172210	DSL10 Blister Refill - 384 certified, sterile
F172310	DS200 Blister Refill - 384 certified, sterile
F172211	DSL10ST Blister Refill - 384 certified, sterile
F172311	DS200ST Blister Refill - 384 certified, sterile
F172213	DSFL10ST Blister Refill - 384 certified, sterile with filter
F172313	DSF30ST Blister Refill - 384 certified, sterile with filter
F172513	DSF200ST Blister Refill - 384 certified, sterile with filter

## Service and Support

### Trust: The Gilson Guarantee

For over 50 years, researchers have trusted Gilson pipettes and instruments to enable your research and provide you with the confidence that you can reproducibly extract, purify, isolate and/or clean up your valuable samples for further analysis. From the legendary PIPETMAN pipettes to HPLC and SPE systems, you can rely on Gilson's extensive experience in sample preparation to deliver simple and flexible solutions, service, and support for your lab.

Each of our PIPETMAN pipettes, including the PIPETMAX 268 and PIPETMAX 278 pipette heads, are inspected by our team of experts and calibrated for accuracy before leaving our facilities so that you can complete your experiments with confidence. Throughout the life of your pipettes and your PIPETMAX 268 and PIPETMAX 278, Gilson's 17025 accredited service centers will ensure that they continue to perform within our stringent specifications.

Our worldwide support network is ready to assist you with training, application support and service. In addition to our 1-year warranty on all Gilson instrumentation, we offer a range of convenient service options, including on-site instrument service, pipette calibration, and extended service plans to protect your investment. Whether you're a new lab or a major established institution, we stand behind our products and by your side - helping you meet your toughest sample prep challenges and ready to serve our customers.



